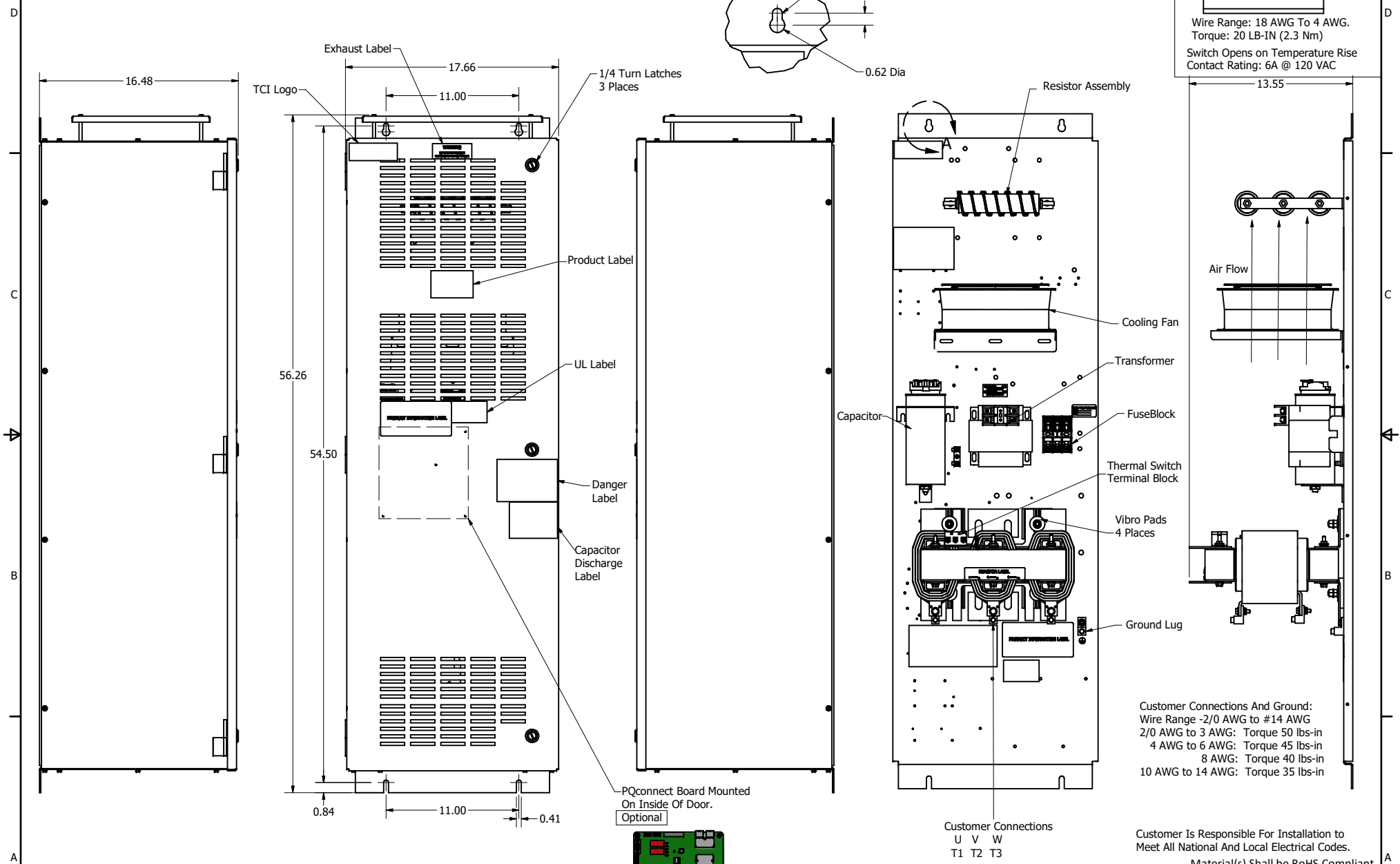
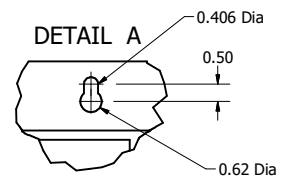
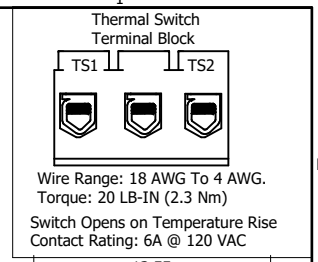


| SineWave Part Number | Schematic Drawing# | Approx Weight (LBS) |
|----------------------|--------------------|---------------------|
| KMG110C01A | 24281-23A | 289 |
| KMG110C01P | 24281-23P | 290 |

| HorsePower (HP) | kVar | Max Amps | Voltage (V) | HZ | Phase |
|-----------------|------|----------|-------------|----|-------|
| 100 | 10 | 110 | 600 | 60 | 3 |



TCI, LLC CLAIMS PROPRIETARY RIGHTS IN THE MATERIAL HEREIN DISCLOSED. IT IS SUPPLIED WITHOUT PREJUDICE TO ANY PATENT RIGHTS OF TCI AND MAY NOT BE REPRODUCED OR USED TO MANUFACTURE ANYTHING SHOWN THEREIN WITHOUT WRITTEN PERMISSION FROM TCI.

| | | TOLERANCES (EXCEPT AS NOTED) | |
|----|---------------------|------------------------------|------|
| | | DECIMAL | |
| | .XX | ± .25 | |
| | .XXX | ± .10 | |
| | | FRACTIONAL | |
| | ± 1/16 | | |
| B | Add PQconnect Board | 9/21/2020 | DSW |
| NO | REVISION | DATE | BY |
| | | | ± 1° |

TCI W132 N10611 Grant Drive
Germantown, WI 53022

KMG110C01- SineWave Filter
Enclosed Type 1, 100HP, 600V

DATE: 10/14/2014
DWG NO: 104445DG

SCALE: 1/5.5
SHEET: 1 OF 1